

A stylized Rod of Asclepius, a symbol of medicine, is depicted on the left. It consists of a vertical orange staff with a circular orange top. A green snake is coiled around the staff. The staff is surrounded by several colorful, overlapping elliptical orbits in shades of purple, green, yellow, and blue, suggesting a dynamic or scientific theme. The background is a gradient of light blue and orange, with faint, larger-scale versions of the Rod of Asclepius symbol.

Caribbean
Public Health
Agency

CARPHA

Regional Platform for Disaster Risk Reduction Special Parallel Session 2: Regional Approach to Coordination on Multi – Hazards: 2020 Lessons from the Caribbean



2nd November, 2021

Dr. Joy St. John
Executive Director
CARPHA

Outline

- Divisions of Labour and Leadership of CARICOM's response to Threats, Hazards and Events
- IMT-ER
- Multi Country impacts and Disaster responses
- CARPHA's support to La Soufriere efforts
- Support to CDEMA led response of the SVG La Soufriere explosive eruption
- Health Aspects
 - Training and Capacity Building in Vector Borne Disease Management in MS
 - CARICOM Security Cluster
 - Tourism and health
 - Falsified medicines
 - Climate Change - Hazard
 - Work Continued Simultaneously

Divisions of Labour and Leadership of CARICOM's response to Threats, Hazards and Events

- **COVID-19 Response**

CARPHA leads the response to Health threats, Hazards and Events

- **Hurricane**
- **Earthquake**

CARPHA deploys to bring a public health perspective to a CDEMA led response

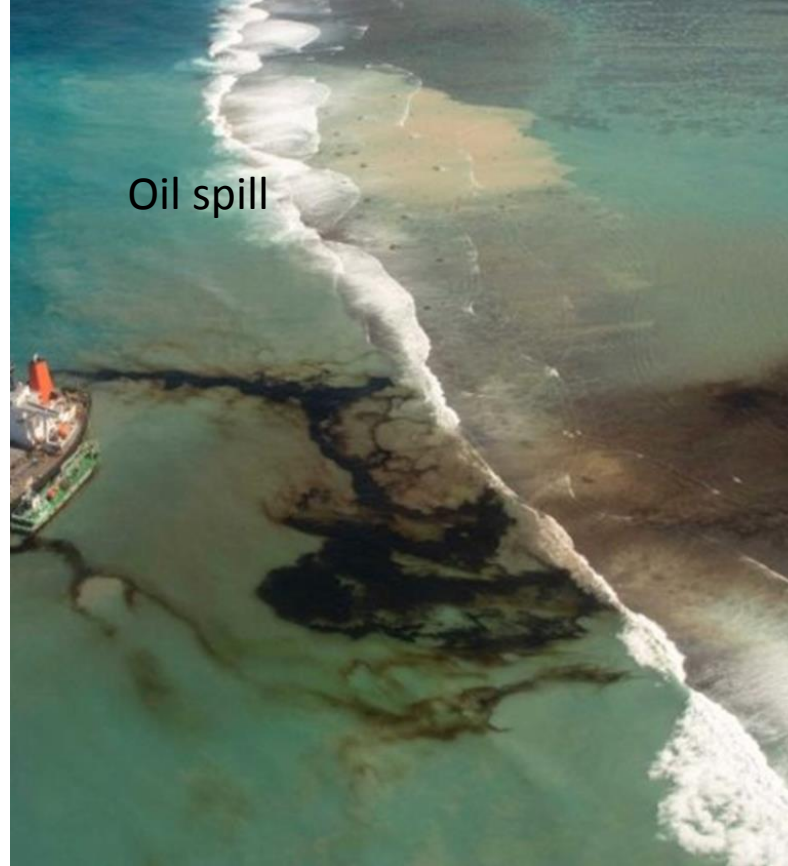


IMT-ER

- Meet weekly to plan response to requests from CDEMA and scan the health landscape
 - Review information from Lab
 - Review information from HCE
 - Monitor for outbreaks
 - Trend monitoring for seasonal outbreaks eg VBD

Multi Country impacts and Disaster responses

- In the past year
 - Guyana floods
 - St. Vincent and the Grenadines – Volcano eruption
 - COVID-19 advice to all 26 MS
 - The Nabarima-contingency planning for the risk of an oil spill which would have been larger than the Exxon Valdez spill!



CARPHA's support to La Soufriere efforts



- Development of Guidance on Respiratory Protection during a Volcanic Eruption



Development of Guidance on Solid Waste Management during a Volcanic Eruption



The development of COVID-19 protocols and infographics for evacuees and deployment during evacuation, approved at the 27th COHSOD meeting



Constant liaison with Chief Medical Officers including the Chief Medical Officer, SVG



Development of sampling strategy, shelter assignments, and other support related to the shelter needs



Provision of laboratory testing (clinical and environmental samples)

CARPHA's support to La Soufriere efforts



7

Joined support and relief efforts that are being coordinated by CDEMA

8

CARPHA will continue to provide technical support in the area of Public Health.

9

CARPHA messages have been developed on personal protection, air quality, water quality and safety measures during volcanic eruptions

10

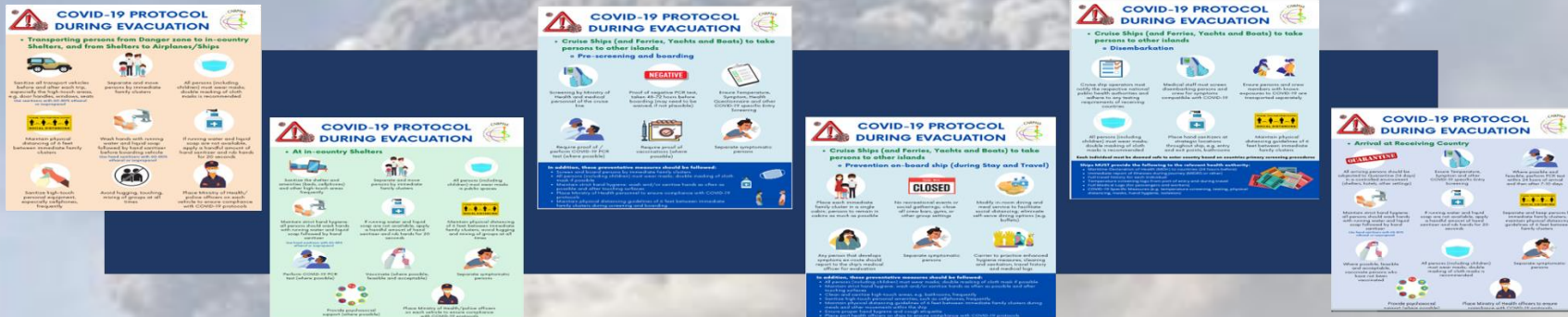
Developed menus for shelters

11

Collaborated with PAHO for the development of the EWARS

Support to CDEMA led response of the SVG La Soufriere explosive eruption

Evacuation Protocols



Approved by the CMOs

CARPHA/PAHO Collaboration on EWARS

A possible solution

Pros

- Mobile equipment in a box
 - Phone
 - including mobile server to collate data from mobile devices
- Customizable
- Can use in communities, shelters, or healthcare facilities

Cons

- Does not do contact tracing
- Requires mobile network coverage
- May not do GIS marking
- Data format is unclear
- Interoperability with existing country Information Systems unknown

The Caribbean Public Health Agency Emergency and Outbreak Response Surveillance Assessment Tool



Disaster Assessment Tool for Shelters during COVID-19

ENVIRONMENTAL HEALTH ASSESSMENT FORM FOR DISASTER SHELTERS DURING COVID-19					
This assessment tool has been adapted from CDC's Interim Guidance for General Population Shelters during COVID-19, Guidelines from Shelters and Shelter Management (Ministry of Health, Jamaica), Caribbean Shelter Guide: COVID-19 considerations (PAHO 2020) and modified for Caribbean setting					
I. ASSESSING AGENCY/MINISTRY					
Agency/Ministry Name:	Immediate needs identified:	Yes	No		
Assessor Name/Title:					
Phone:	Email:	Other contact:			
Date and time assessed: _____					
VII. HEALTH/MEDICAL					
Number of ill occupants within the last 24 hours:	Unk/NA	Areas designated as restricted access for isolation in facility are clearly marked:	Yes	No	Unk/NA
Number of pregnant women:	Unk/NA	Hard barriers or partitions are used to create isolation areas for ill occupants:	Yes	No	Unk/NA
Number of breastfeeding women:	Unk/NA	Designated bathroom/shower facilities for occupants in isolation areas:	Yes	No	Unk/NA
Number of physically disabled occupants:	Unk/NA	Food services are delivered to ill occupants and staff in isolation areas:	Yes	No	Unk/NA
Number of mentally challenged occupants:	Unk/NA	Hand Hygiene supplies are available in adequate quantities:	Yes	No	Unk/NA
Reported injuries within last 24 hours:	Yes No Unk/NA	Cleaning and disinfection of isolation areas at least every 4 hours:	Yes	No	Unk/NA
Reported respiratory illness(es):	Yes No Unk/NA	Plans or protocols for transporting the severely ill:	Yes	No	Unk/NA
Reported GI illness(es):	Yes No Unk/NA	Limited number of staff working in isolation areas:	Yes	No	Unk/NA
Other reported illness/outbreak:	Yes No Unk/NA	Staff uses adequate PPE for activities undertaken in isolation areas:	Yes	No	Unk/NA
If yes, describe:		NOTES			
Medical care services on site:	Yes No Unk/NA				
First aid kits available on site:	Yes No Unk/NA				
AEDs available on site:	Yes No Unk/NA				
Mental health services available:	Yes No Unk/NA				
Temperature-controlled medication storage:	Yes No Unk/NA				
All occupants undergo testing if needed:	Yes No Unk/NA				
If yes, what type(s) of test:	Type _____				
COVID-19:	Type _____				
Influenza:	Type _____				
Other:	Type _____				
Medical staff entering isolation areas have full PPE (gowns, gloves, masks, goggles):	Yes No Unk/NA				
Is PPE available in adequate quantities for disaster shelter medical staff:	Yes No Unk/NA				
If yes, select which are available:	Masks Respirators Gloves Goggles Face shields Gowns				



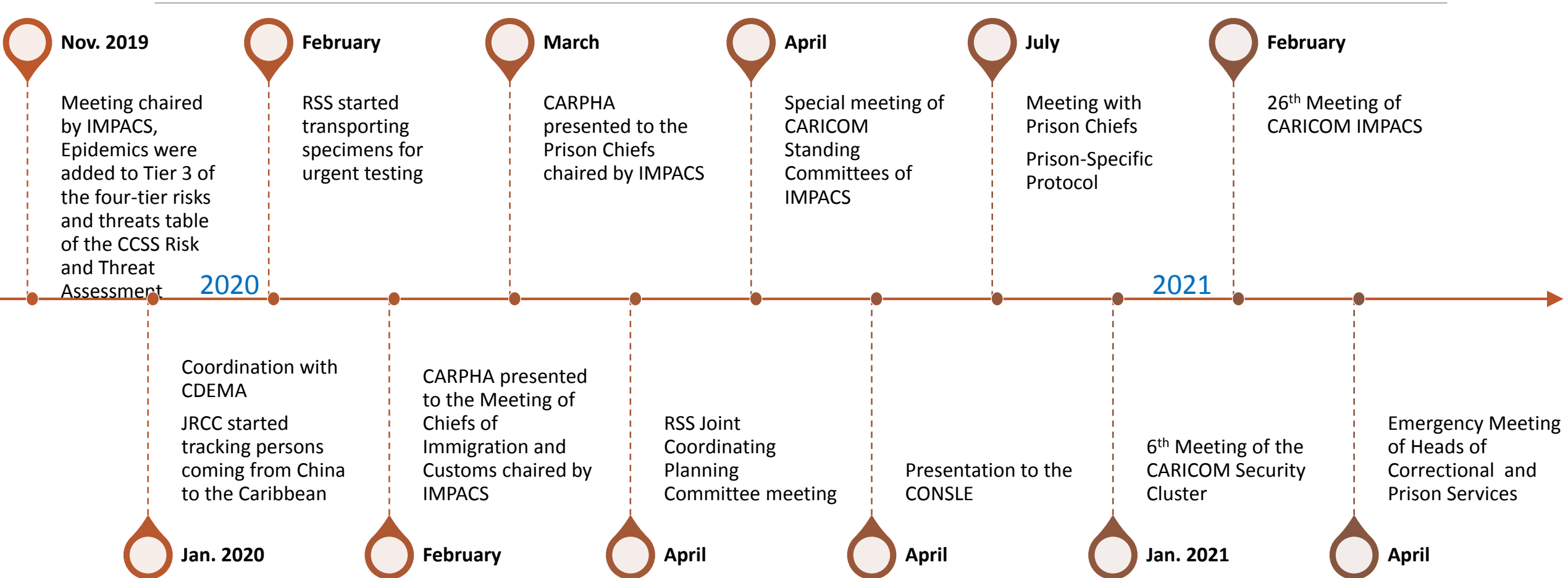
Health Aspects

Training and Capacity Building in Vector Borne Disease Management in MS

- Training strategies are engaging
- Country specific (respectful of culture, behavioural patterns)
- Training done in both English and non-English speaking MS
- Messaging involves community engagement
- No one size fits all approach
- Work with local teams to translate material in local colloquium



Security Cluster of CARICOM's COVID-19 Response



THP: Responding to COVID-19

Enhancing visitors and locals' Health & Safety, Traveller's Confidence, Regional Health Security, Tourism Resilience

Guidelines for Safe Reopening

- COVID-19 Health Guidelines
- Food & Beverage Industry
- Hoteliers, Travellers
- Ships, resuming travel
- Travel Bubble



Real-time, Early Warning and Response Health Information System (THIS)

- Updated THIS users
- Hotels, Guesthouses
- MOH, Health centers
- Transport, Tour Operators
- Self reporting



Travellers Health Assurance Stamp

"Healthier, Safer Tourism"

- Regional recognition award for facilities using THIS, Training, guidelines.
- HST facilities on App



Caribbean Vessel Surveillance System

- Regional surveillance platform for cruise ships and vessels

Travel Measures

- Weekly Travel Briefs
- Travel Advisories
- Country Reopening Plans



Increased Advocacy and Engagement

- Advocacy and promotional items
- Increased communication with stakeholders
- Social media



Caribbean Travellers Health App

- To increase our reach, mobile applications were developed to provide relevant information/updates for the public

COVID-19 Tourism Task Force

CTO, CHTA, OECS, GTRCMC

- Harmonised strategies to rebuild a healthier, safer tourism industry
- COVID-19 Health Training Series

Updated website

<https://www.carpha.org/THP>



Caribbean
Public Health
Agency

CARPHA

CARIBBEAN
TOURISM & HEALTH PROGRAM
Ensuring the health & safety of our visitors & locals



CARIBBEAN
HOTEL & TOURISM
ASSOCIATION



GTRCMC
GLOBAL TOURISM RESILIENCE
& CRISIS MANAGEMENT CENTRE

Media reports in CMS: Fake / diverted vaccines



Vaccine Diversion: Jamaica, September 2021



Fake COVID vaccines being offered to Trinidad – PM



By Staff Editor February 22, 2021

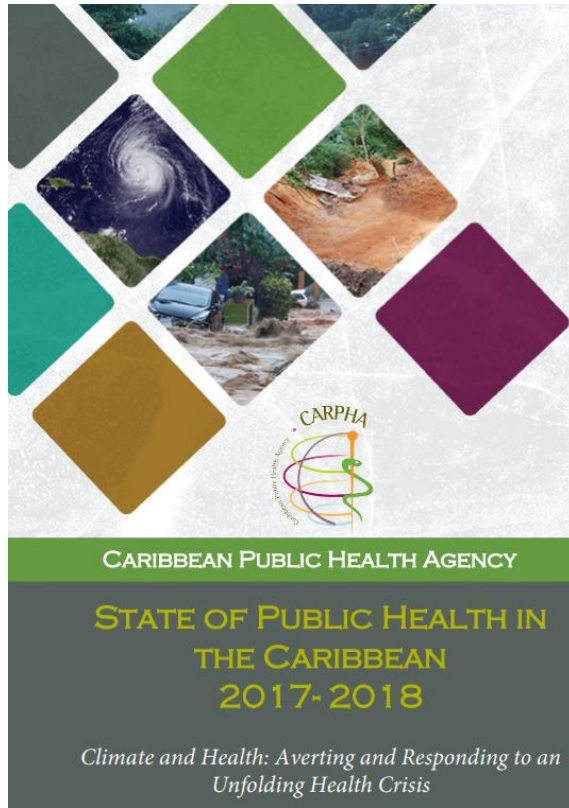


(Trinidad Guardian) Charlatans are attempting to peddle over-inflated –and even downright fake–vaccines to the Government.

The revelation came from Prime Minister Dr Keith Rowley during a

Comment by Prime Minister of Trinidad and Tobago, Feb. 2021

Climate Change - Hazard



65TH ANNUAL HEALTH RESEARCH CONFERENCE
16-19 JUNE 2021

PANDEMIC, NCDs AND CLIMATE CHANGE: The Caribbean's Triple Threat

VIRTUAL CONFERENCE

FEATURED SPEAKERS

<p>Dr. Tedros Adhanom Ghebreyesus Director General World Health Organization</p> <p>Message to Delegates</p>	<p>Prof. Denise Eledemire-Shearer Director Mona Ageing and Wellness Centre University of the West Indies</p> <p>Topic: Ageing in the Caribbean: Yesterday, Today and Tomorrow</p>
<p>Dr. Hugh Montgomery Director of UCL Institute for Human Health and Performance, Professor of Intensive Care Medicine at University College London (UCL)</p> <p>Topic: Matters of Survival: The Human Impacts of Climate Change</p>	<p>Dr. Joy St John Executive Director Caribbean Public Health Agency</p> <p>Topic: The Caribbean's Response to COVID-19</p>
<p>Dr. Diarmid Campbell-Lendrum Head, Climate Change and Health Unit, World Health Organization</p> <p>Topic: Protecting health from climate change in the Caribbean: Do we already know enough?</p>	<p>Prof. Asha Badaloo Professor, Nutritional Metabolism Tropical Metabolism Research Unit Caribbean Institute for Health Research University of the West Indies, Jamaica</p> <p>Topic: Probing in vivo Metabolism using Stable Isotope Tracer technique</p>

CARPHA

Work Continued Simultaneously

